

**I DIDN'T KNOW YOU WOULD BE PLOWING AND I THINK IT'S UNFAIR THAT I GOT A TICKET OR TOWED.**

We do our best to publicize the Emergency Parking Ban. Before the winter season starts, information regarding this ordinance is placed in newspapers and on local radio stations and other local media. When the ban is placed in effect, we will try to contact local TV and radio stations.

**WHY DON'T YOU JUST TOW THE CARS OFF THE STREET THAT DON'T OBSERVE THE SNOW EMERGENCY PARKING BAN?**

Towing and ticketing are labor intensive and time consuming. Our goal is to have a safe roadway system, even in the winter. We would prefer not to have to write any tickets or do any towing. The \$25 fine shows people how serious the City is about efficient snow removal.

**CAN I PARK ON THE STREET?**

Yes, but when snow is forecasted it's best to plan ahead and have your vehicle off the street before the snow begins to accumulate. It is difficult to do a good job of removing snow when vehicles are parked on the street during a snow event. Maneuvering a snow plow in and out between parked cars is dangerous and leaves both the City and individuals open to more damage to vehicles and equipment. **For cars that must be parked Downtown, please seek off street parking in any of the City owned parking lots.**

**WHO CAN I CALL IF I'VE GOT A COMPLAINT OR A REQUEST?**

For normal snow plowing or de-icing operations call Public Works at 673-6885. For unshoveled sidewalks call City Improvement at 660-7653. All emergency requests including those after normal working hours should go to the Oskaloosa Police Department at 672-2557.

**I'D LIKE TO MAKE A SUGGESTION ON SNOW CONTROL: TO WHOM CAN I SEND IT?**

We'll be happy to consider your suggestions. Send them to the Oskaloosa Public Works Department, 804 S. D St., Oskaloosa 52577 or call us at 673-6885, or go to the City Website at [www.oskaloosaiowa.org](http://www.oskaloosaiowa.org) to reach anyone of our staff.

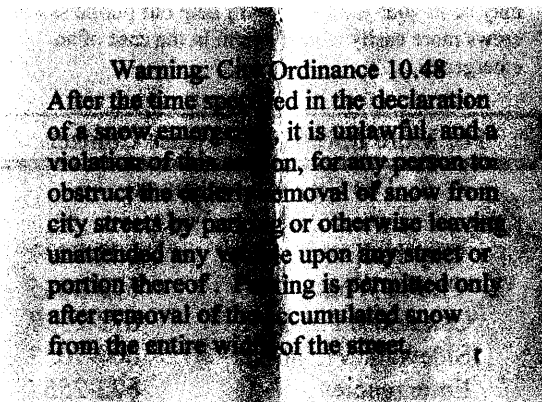
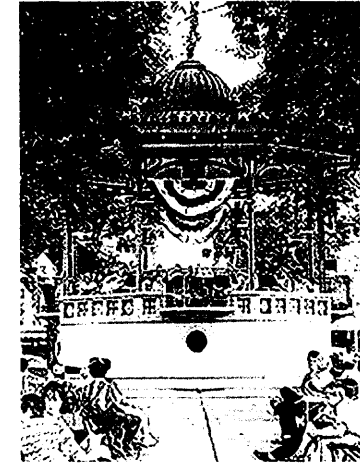
**WHEN WILL MY STREET BE PLOWED?**

The City has established priorities for the various classifications of streets. Main arterial streets that must be kept open to provide a transportation system for emergency vehicle units will try to be kept open at all times. Depending on storm conditions, crews may have the opportunity to start plowing some residential streets before the storm ends. The City's goal is to have all paved streets completely plowed within 24 hours after the storm has ended. The Downtown area will be plowed on a first priority basis and then final clean-up will occur the next morning.

**WHY DOES THE CITY SOMETIMES SPRAY LIQUID MATERIAL ON THE ROAD BEFORE AND DURING A STORM?**

The City of Oskaloosa takes a pro-active approach to storm management. This process is called anti-icing. Applying chemical de-icers before and during a storm can prevent the snow and ice from bonding to the pavement. This allows crews to remove snow from the pavement more effectively and reduces the amount of chemicals needed to maintain a safe pavement surface.

## City of Oskaloosa Iowa



## Snow and Ice Control

Citizen Information and  
Frequently Asked Questions

Information provided by:

City of Oskaloosa

## Winter in Central Iowa

Living in Iowa we all know how unpredictable our weather can be. Although our average annual snowfall is approximately 37 inches, we can only rely on the most current meteorological information to predict our future needs.

With a mostly rural population and several types of streets, the City takes a serious approach to the problems associated with snow and ice removal.

## Normal Snow Conditions

Our fleet of snow fighting equipment is prepared before snow is forecast. The city is fortunate to have a dedicated staff capable of operating the multiple pieces of equipment used to fight snow and ice. Our Department will do our best to keep streets open for safe winter travel.

The City's present snow control policy establishes the priority for snow control on streets in the following order:

- FIRST PRIORITY:** All designated Snow Routes.
- SECOND PRIORITY:** Secondary Roads and Cul-de-Sacs
- THIRD PRIORITY:** Alleys and City parking lots.

## Emergency Snow Conditions

**Snow Emergency Declaration:** During snow events, when plowing will be necessary, the City will implement an Emergency Snow Ordinance. All vehicles must be removed from **all** City streets when the snow emergency is in effect until the entire width of the street is plowed. Vehicles that have not been moved will be fined \$25, towed, or both. The snow emergency will be terminated when the City Manager finds that conditions no longer exist and conditions have improved. To help our operators perform their plowing duties in a safe and efficient manner, we ask that residents park elsewhere when snow begins to accumulate. You may call City Hall to find out if the parking ban is in effect.

## Citizens Responsibilities

Snow can be beautiful, but it can also create hazards. When residents fail to clear their sidewalks, the results can be treacherous. We need your help in protecting pedestrians from possible injury.

Residents are required by ordinance to clear sidewalks (including those crossing alleys, crosswalks and driveways) within 24 hours of the end of a storm. Please pile the snow on your yard, not in the street. If your sidewalk is icy, you may correct the hazard by applying a heavy coat of sand or de-icer. A helpful hint for residents – clear your sidewalk after the snowplows have finished plowing to the curb.

## Mailboxes and Fire Hydrants

The City will plow the snow within the confines of curb line to curb line of a street. During heavy snowfalls there may be times when City plows cannot physically place the snow onto the right-of-way. During these times the resident will be responsible for clearing the snow around their mailbox to assure delivery of mail. It is also the resident's responsibility for assuring that the face of their mailbox is properly installed: the face should be six (6") to eight (8") inches behind the back of the curb, the mailbox bottom 48 inches higher than the street, and be adequately constructed to withstand snow clearing efforts by the City. It is also a good idea to clear snow from around any fire hydrant that may be in your yard. This will help our public safety crews more easily identify them in the case of an emergency.

## For More Information Please Contact

### The City of Oskaloosa

|                     |          |
|---------------------|----------|
| City Hall           | 673-9431 |
| Public Works        | 673-6885 |
| Oskaloosa Police    | 672-2557 |
| Sidewalk Violations | 660-7653 |
| Emergencies         | 672-2557 |

## Frequently Asked Questions About Snow Control

### CAN'T THE CITY REMOVE THE SNOW THEY PUT IN MY DRIVEWAY?

When you consider the large number of driveways in the City, it would be costly and time consuming to use additional people and equipment to perform this service. Our primary duty is to open and maintain the roadway system.

### WHY DO THE PLOWS GO SO FAST AND THROW SNOW ON MY SIDEWALK?

Plows need to go a minimum speed in order to throw the snow off of the roadway onto storage areas in the public right-of-way. We ask our operators not to throw the snow any further than necessary. In some cases however, the sidewalks may be too close to the curb to avoid getting snow on them.

### WHAT CAN YOU DO TO GET THE PUBLIC TO SHOVEL THEIR SIDEWALKS?

City ordinance required property owners to shovel their sidewalks. We try to follow up on all sidewalk complaints, but like parked autos, it takes a number of people to enforce them. If you do see an unshoveled walk that is dangerous to pedestrians, please call 660-7653.

### WHY CAN'T YOUR OPERATORS GET ALL OF THE PACKED SNOW OFF THE STREETS?

The Public Works' Department uses snow plows that can be mounted on the same trucks we use during the summer. These plows have the tendency to ride on top of densely compacted snow. If traffic has driven on streets before they are plowed the compacted snow can be extremely difficult to remove.

### CAN I SHOVEL / PLOW / BLOW THE SNOW FROM MY SIDEWALK OR DRIVEWAY INTO THE STREET?

No. This can create hazardous conditions in the street, and we have an ordinance prohibiting it.